

330
MADISON
AVENUE

GRAND CENTRAL RESTAURANT OPPORTUNITY



MEAG

JLL

A Munich Re company

GRAND CENTRAL RESTAURANT OPPORTUNITY

WHEN LOCATION MATTERS MOST



100
WALK SCORE

100
TRANSIT SCORE

100
BIKE SCORE

WITHIN 10 MIN WALK

224,395
DAYTIME POPULATION

12M SF
AREA OFFICE SPACE

84
HOTELS

SUBWAY

45M+
2019 ANNUAL RIDERSHIP

157,273
2019 WEEKDAY RIDERSHIP

NEIGHBORING RETAIL

- Apple
- AVEDA
- MAC
- SHAKE SHACK
- SEPHORA
- BANANA REPUBLIC
- swatch
- EQUINOX
- lululemon
- athletica

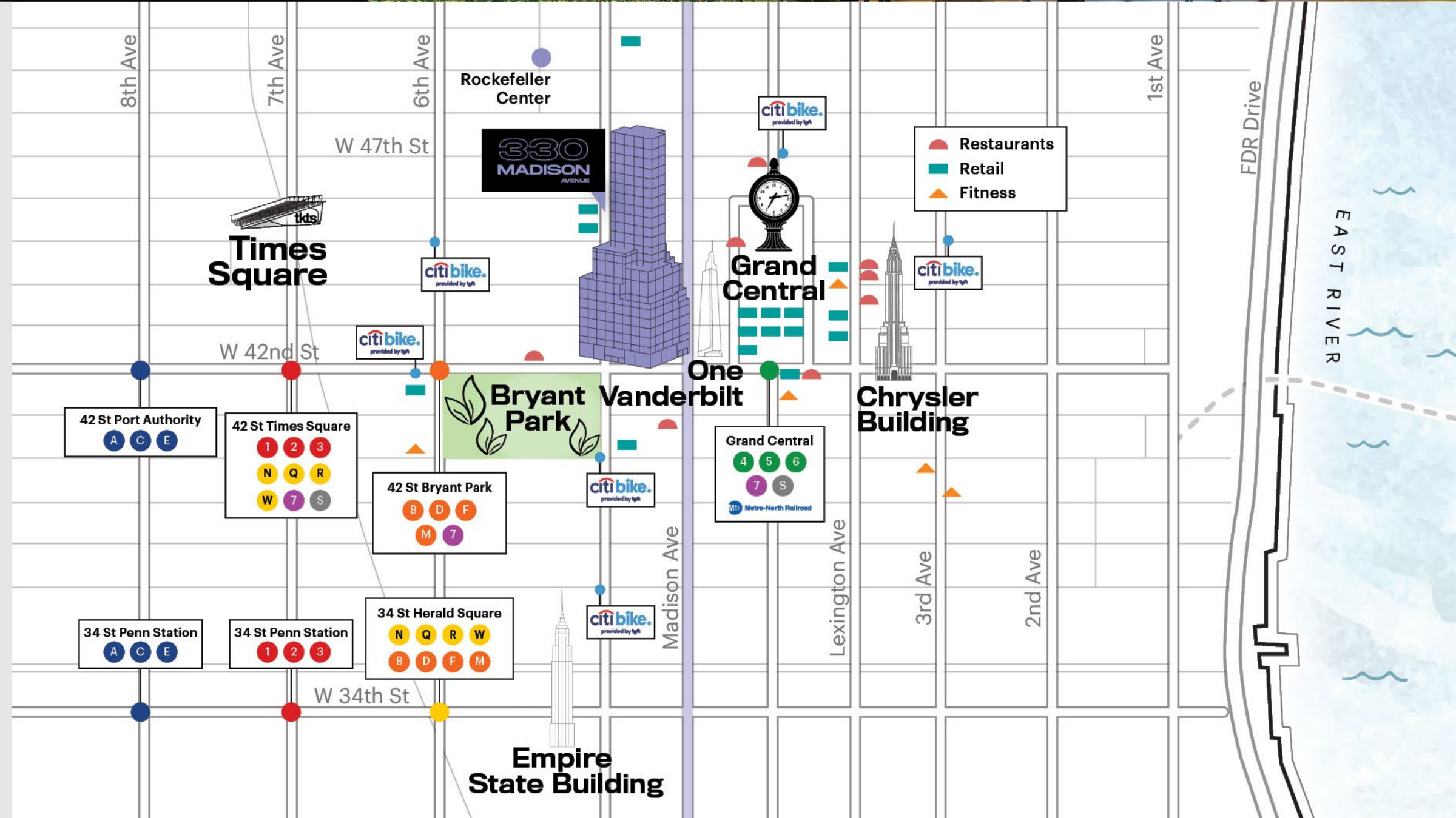
and other stores

GRAND CENTRAL

750,000
DAILY VISITORS

1M
TO INCREASE WITH EAST SIDE ACCESS

225,000
2019 WEEKDAY COMMUTERS



GRAND CENTRAL RESTAURANT OPPORTUNITY

WHEN LOCATION MATTERS MOST



LOCATION

330 Madison Avenue
Southwest corner of Madison
Avenue & 43rd Street

SIZE

Ground Floor:
+/- 7,075 sf

Lower Level:
+/- 3,760 sf

FRONTAGE

Madison Avenue: 70'10"
43rd Street: 971"

SITE STATUS

Vacant

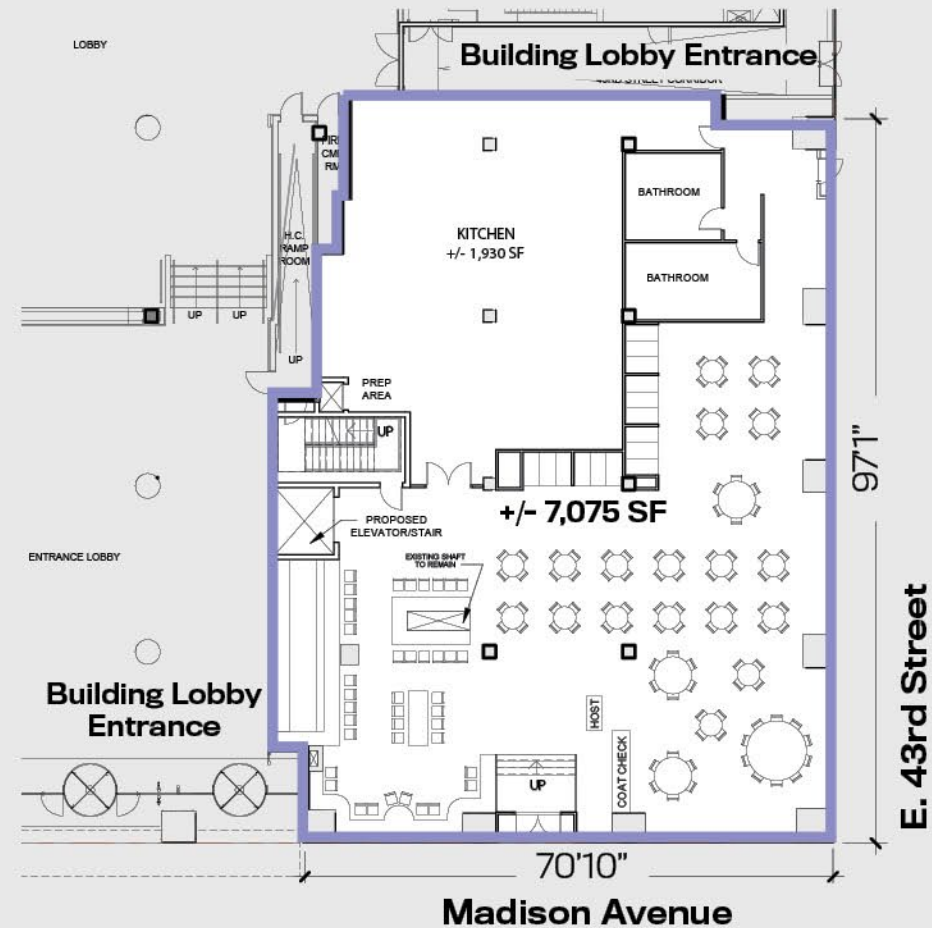
POSSESSION

Immediate

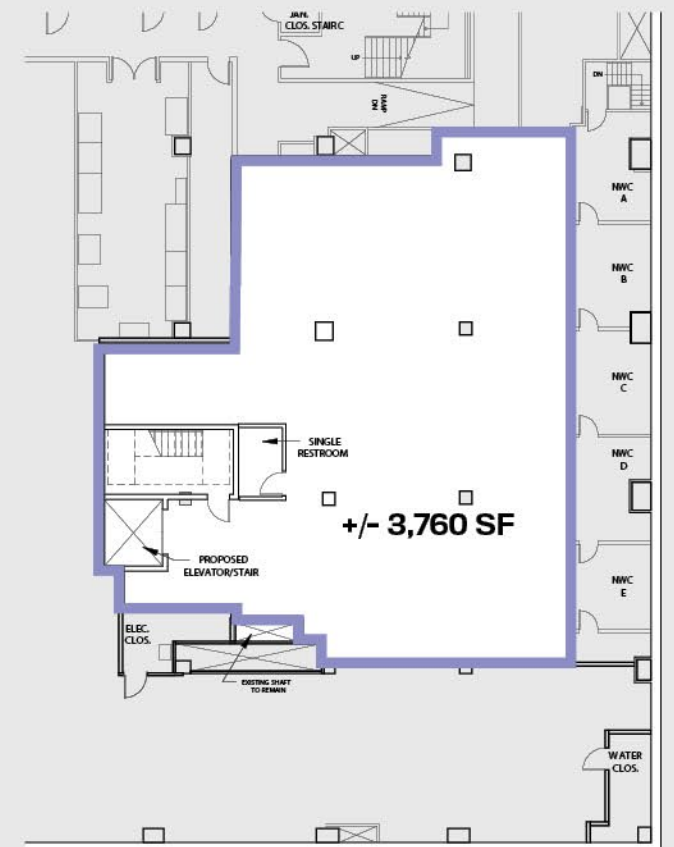
FEATURES

- Centrally located in the heart of Midtown, between Grand Central Terminal and Bryant Park
- Directly across from the 1.7M sf One Vanderbilt development and an all-new 14,000 sf pedestrian plaza
- Double-height glass storefronts and high ceiling present expansive signage and branding opportunities
- Nearly 100 feet of wraparound frontage provides maximum exposure and visibility on Madison Avenue and 43rd Street
- At the base of an 803,844 sf Class-A office tower, home to a robust tenant roster of top-tier finance, banking, law and real estate firms
- Additional office space can be made available

GROUND FLOOR PLAN



LOWER LEVEL PLAN



GRAND CENTRAL RESTAURANT OPPORTUNITY

WHEN LOCATION MATTERS MOST

INTERIOR RENDERING



GRAND CENTRAL RESTAURANT OPPORTUNITY

WHEN LOCATION MATTERS MOST

330 MADISON AVENUE

MATT OGLE

+1 212 812 5982
matt.ogle@am.jll.com

ERIN GRACE

+1 212 812 5882
erin.grace@am.jll.com

COREY ZOLCINSKI

+1 212 812 5707
corey.zolcinski@am.jll.com

PATRICK A. SMITH

+1 212 812 5888
patricka.smith@am.jll.com

330Madison.com



A Munich Re company

Jones Lang LaSalle Brokerage, Inc. | 330 Madison Avenue New York, NY 10017

DISCLAIMER
Although information has been obtained from sources deemed reliable, neither Owner nor JLL makes any guarantees, warranties or representations, express or implied, as to the completeness or accuracy as to the information contained herein. Any projections, opinions, assumptions or estimates used are for example only. There may be differences between projected and actual results, and those differences may be material. The Property may be withdrawn without notice. Neither Owner nor JLL accepts any liability for any loss or damage suffered by any party resulting from reliance on this information. If the recipient of this information has signed a confidentiality agreement regarding this matter, this information is subject to the terms of that agreement. ©2022 Jones Lang LaSalle IP, Inc. All rights reserved.

